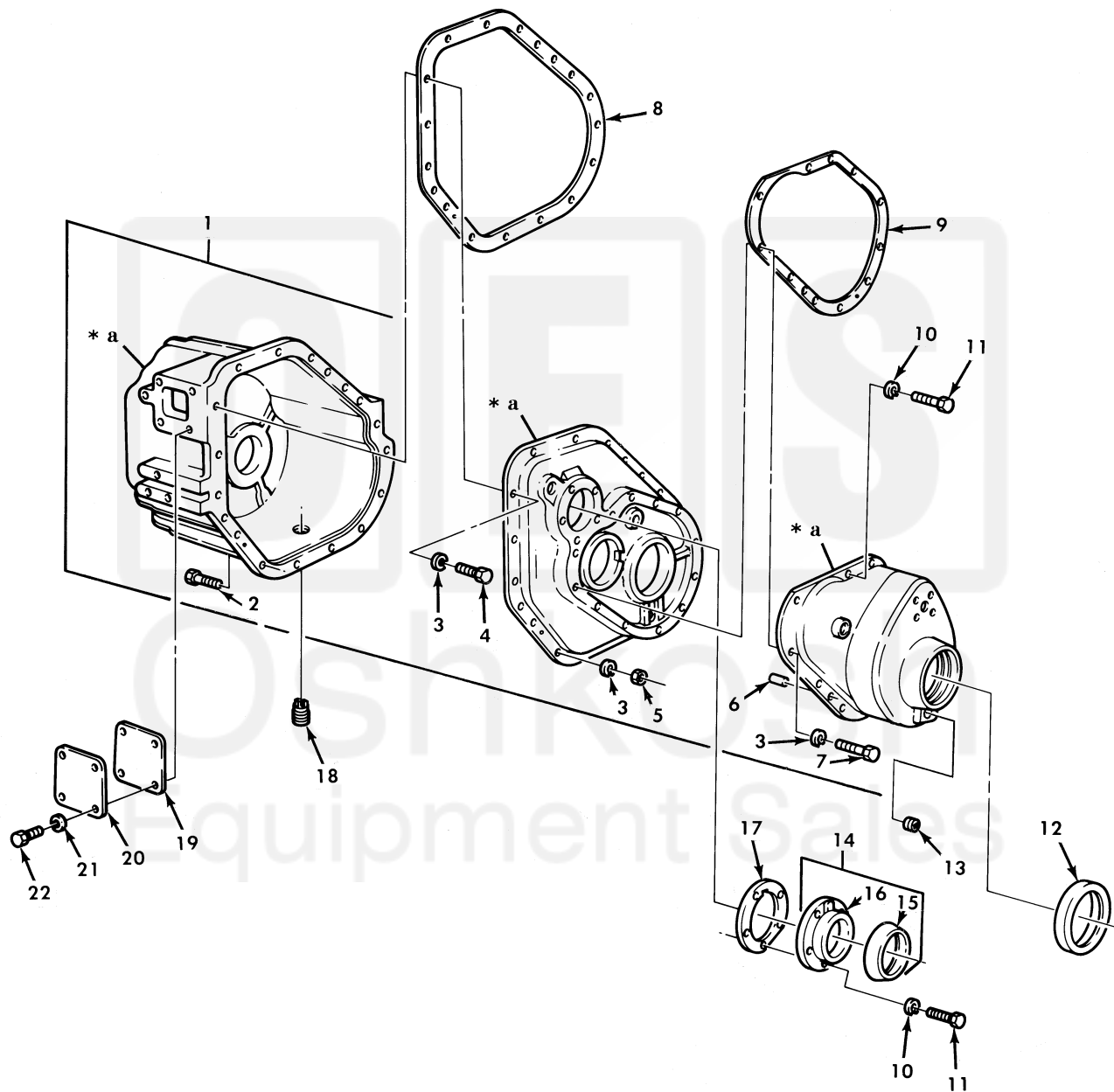


UNIT, DIRECT SUPPORT, AND GENERAL SUPPORT MAINTENANCE
REPAIR PARTS AND SPECIAL TOOLS LIST
TRUCK, 5-TON, 6X6, M809 SERIES TRUCKS (DIESEL)



* a PART OF ITEM 1

Figure 143. Transfer Cover and Housing Assembly, Gaskets, and Access Plates.

(1) ITEM NO	(2) SMR CODE	(3) NSN	(4) CAGEC	(5) PART NUMBER	(6) DESCRIPTION AND USABLE ON CODE (UOC)	(7) QTY
GROUP 0801 POWER TRANSFER AND FINAL DRIVE ASSEMBLIES						
FIG. 143 TRANSFER COVER AND HOUSING ASSEMBLY, GASKETS, AND ACCESS PLATES						
1	PAHZZ	2520-01-102-3494	19207	12300500	COVER AND HOUSING.....	1
2	PAHZZ	5305-00-139-4620	19207	11609328-2	. SCREW, CAP, HEXAGON H.....	9
3	PAHZZ	5310-00-209-0965	96906	MS35338-47	. WASHER, LOCK.....	15
4	PAHZZ	5305-00-071-1789	80204	B1821BH044C138N	. SCREW, CAP, HEXAGON H.....	1
5	PAHZZ	5310-00-880-7745	96906	MS51968-11	. NUT, PLAIN, HEXAGON.....	9
6	PAHZZ	5315-01-129-2243	19207	7521442	. PIN, STRAIGHT, HEADLE.....	2
7	PAFZZ	5305-00-071-1788	80204	B1821BH044C125N	. SCREW, CAP, HEXAGON H.....	5
8	PAHZZ	5330-00-040-2234	19207	7375246	GASKET PART OF KIT P/N 7346775.....	1
9	PAHZZ	5330-00-563-5524	19207	7375293	GASKET PART OF KIT P/N 7346775.....	1
10	PAHZZ	5310-00-209-0965	96906	MS35338-47	WASHER, LOCK.....	10
11	PAFZZ	5305-00-071-1788	80204	B1821BH044C125N	SCREW, CAP, HEXAGON H.....	10
12	PAFZZ	5330-01-023-0269	19207	12470105	SEAL, PLAIN ENCASED.....	1
13	PAOZZ	4730-00-737-5248	19207	8757704	PLUG, PIPE.....	1
14	PAFZA	3110-00-734-6758	19207	7346758	PLATE, RETAINING, BEA.....	1
15	PAFZZ	5330-01-023-0269	19207	12470105	. SEAL, PLAIN ENCASED.....	1
16	PAFZZ	3110-01-182-4260	19207	8758287	. PLATE, RETAINING, BEA.....	1
17	PAFZZ	5330-00-563-5523	19207	7375292	GASKET PART OF KIT P/N 7346775.....	1
18	PAOZZ	4730-00-737-5249	19207	7375249	PLUG, PIPE, MAGNETIC.....	1
19	PAFZZ	5330-01-231-9265	19207	7375294	GASKET PART OF KIT P/N 7346775.....	1
20	PAFZZ	5340-00-232-6122	19207	7346761	COVER, ACCESS.....	1
21	PAFZZ	5310-00-637-9541	96906	MS35338-46	WASHER, LOCK.....	4
22	PAFZZ	5305-00-543-4372	80204	B1821BH038C075N	SCREW, CAP, HEXAGON H.....	4

END OF FIGURE

